

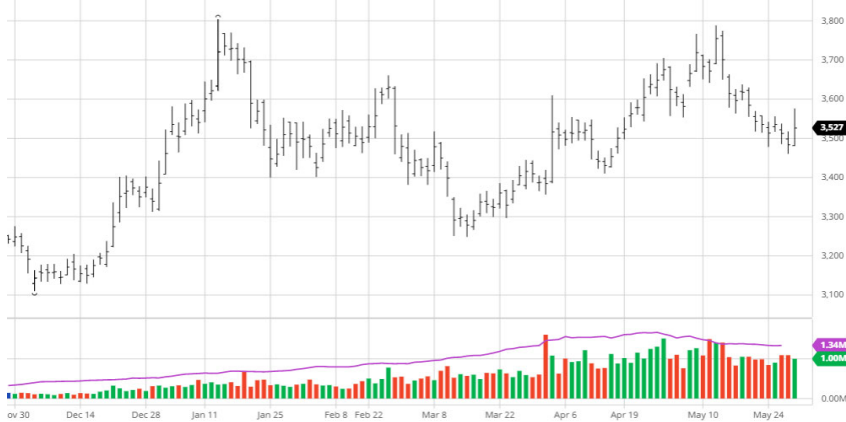
# Dalian Commodity Exchange Weekly Net Change for May 28, 2021

DCE Corn Sep '21 (XVU21)



Weekly Net Changes for Dalian Corn Futures										
Cont. Yr/Mnth	Open	High	Low	Close	Settle	Chg	Volume	OI	OI Chg	
c2107	2,797	2,805	2,722	2,733	2,742	-60	203,410	68,575	-12,003	\$10.72
c2109	2,764	2,773	2,655	2,682	2,686	-87	3,051,668	589,064	44,337	-3.24%
c2111	2,721	2,725	2,628	2,644	2,647	-79	362,689	198,161	9,983	
c2201	2,730	2,734	2,638	2,654	2,660	-84	273,824	132,532	26,089	
c2203	2,731	2,732	2,642	2,664	2,665	-74	118,735	32,977	4,087	
c2205	2,722	2,722	2,643	2,664	2,665	-65	5,157	2,633	1,562	
<b>Corn Totals</b>	-	-	-	-	-	-	4,015,483	1,023,942	74,055	

DCE Soy Meal Sep '21 (XUU21)



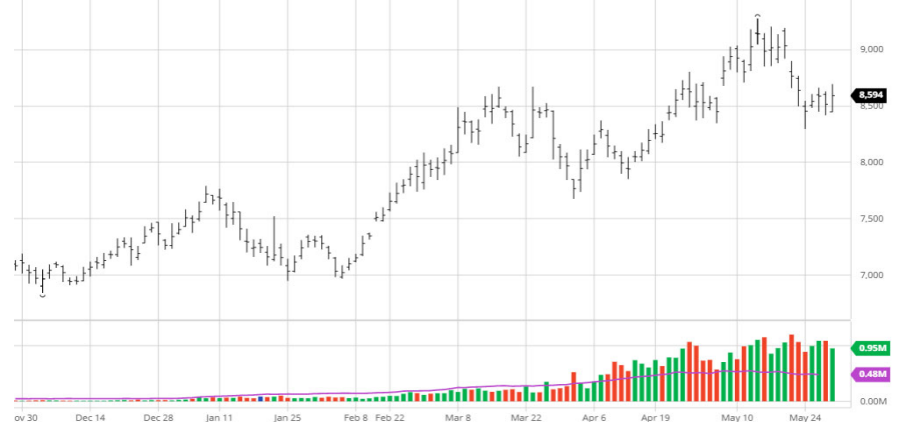
Weekly Net Changes for Dalian Soymeal Futures										
Cont. Yr/Mnth	Open	High	Low	Close	Settle	Chg	Volume	OI	OI Chg	
m2107	3,446	3,493	3,378	3,453	3,444	-5	302,744	101,164	-13,150	
m2108	3,543	3,596	3,474	3,546	3,540	-6	37,976	6,317	1,818	\$502.50
m2109	3,528	3,576	3,461	3,532	3,527	-4	4,841,973	1,272,668	-99,074	-0.11%
m2111	3,524	3,592	3,471	3,535	3,525	0	92,234	12,605	3,643	
m2112	3,509	3,565	3,468	3,541	3,544	3	100	264	-38	
m2201	3,495	3,556	3,450	3,520	3,513	12	824,051	366,834	6,439	
m2203	3,373	3,408	3,311	3,380	3,366	8	149,522	205,050	12,593	
m2205	3,311	3,333	3,248	3,307	3,306	-12	33,629	16,340	5,440	
<b>Soymeal Total</b>	-	-	-	-	-	-	6,282,229	1,981,242	-82,329	

DCE No.1 Soybean Sep '21 (XTU21)



Weekly Net Changes for Dalian Soybean Futures										
Cont. Yr/Mnth	Open	High	Low	Close	Settle	Chg	Volume	OI	OI Chg	
a2107	5,888	5,939	5,627	5,676	5,703	-226	70,570	4,019	-3,549	\$24.49
a2109	5,913	5,985	5,651	5,701	5,730	-236	864,063	120,546	24,329	-4.12%
a2111	5,921	6,003	5,688	5,730	5,765	-224	18,783	22,588	1,623	
a2201	5,950	6,023	5,711	5,758	5,780	-221	42,593	17,276	3,580	
a2203	5,961	6,039	5,742	5,792	5,816	-192	7,016	6,385	1,071	
a2205	5,979	6,025	5,764	5,850	5,871	-141	786	259	148	
<b>Soybeans Total</b>	-	-	-	-	-	-	1,003,811	171,073	27,202	

DCE Soybean Oil Sep '21 (XXU21)



Weekly Net Changes for Dalian Soyoil Futures										
Cont. Yr/Mnth	Open	High	Low	Close	Settle	Chg	Volume	OI	OI Chg	
y2107	8,876	9,122	8,632	9,074	8,956	142	5,641	1,957	-1,774	
y2108	8,568	8,776	8,382	8,670	8,690	-42	66	392	-20	\$0.61
y2109	8,500	8,696	8,300	8,606	8,594	-36	4,964,652	483,874	-10,978	-0.4%
y2111	8,392	8,486	8,192	8,436	8,400	-86	107,845	36,556	4,307	
y2112	8,354	8,400	8,136	8,350	8,270	-128	29,632	58,189	7,674	
y2201	8,308	8,352	8,062	8,292	8,242	-130	400,230	78,455	10,272	
y2203	8,182	8,262	7,942	8,144	8,102	-190	6,096	2,770	258	
y2205	8,082	8,192	7,834	7,972	7,968	-234	3,208	1,308	971	
<b>Soyoil Total</b>	-	-	-	-	-	-	5,517,370	663,501	10,710	

1 US \$ = 6.3675

Charts reflect 3:00PM (1:00AM CST) Beijing Settlement; Close in Data Table reflects extended hours 11:30PM (9:30 AM CST)

Dalian Corn does not have extended trading hours; Weekly % (+/-) reflective of settlement price

Green Box = CBOT \$ Equivalent for DCE Lead Contract